

PET Bullet Syringe Shields



- Simply insert syringe and twist, it locks in place
- Available with or without High Density Lead Glass Window
- No Screws, No Springs, 9mm Tungsten
- Small anti-roll nodules keep them from rolling off the countertop

Without Lead Glass Window
 BUPET3 PET Bullet Syringe Shield, 3 cc without glass
 BUPET5 PET Bullet Syringe Shield, 5 cc without glass
 BUPET10 PET Bullet Syringe Shield, 10 cc without glass



With Lead High Density Lead Glass Window
 BUPET3-G PET Bullet Syringe Shield, 3 cc
 BUPET5-G PET Bullet Syringe Shield, 5 cc

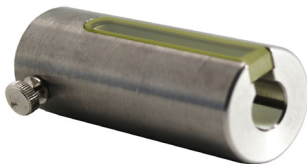
Replacement Glass:
 SSB-PG1 Replacement Glass, 3 cc or 5 cc

Pro-Tec™ PET Syringe Shields

- Constructed of .34" thick (9 mm) tungsten, attenuates FDG F-18 by 88%
- Available with or without a high density (5.6) flush mounted lead glass window
- A thumbscrew holds the syringes firmly in place



Without Lead Glass Window
 007-985 Syringe Shield, 3 cc without glass
 007-990 Syringe Shield, 5 cc without glass
 007-995 Syringe Shield, 10 cc without glass



With Lead Glass Window
 007-973 Pro-Tec PET Syringe Shield, 3 cc
 007-975 Pro-Tec PET Syringe Shield, 5 cc
 007-980 Pro-Tec PET Syringe Shield, 10 cc

Replacement Screw
 000-PET Pro-Tec PET Replacement Screw
 Replacement Glass
 007-974 Pro-Tec PET Replacement Glass

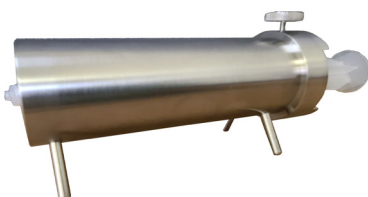
Z-PET Syringe Shield



- Constructed of .55 thick (14 mm) tungsten, attenuates FDG F-18 by 97%
- Accommodates standard 3 and 5 cc syringes

PET14-3C Syringe Shield, 3 cc
 PET-14SC Replacement Screw for PET14-3C
 007-945 Syringe Shield, 5 cc
 000-ZPET Replacement Screws for 007-945

50 / 60 cc Syringe Shield



- 9mm Tungsten
 - 4 Legs to prevent rolling
 - Screw locks syringe in place
 - 5.75" L x 1.875" D x 3.25" H (height to screw)
 - Weight: 6.6 lb
- 60-09T 50/60 ml, 9mm Tungsten Syringe Shield

PET-14SC Replacement Screw for 60-09T