

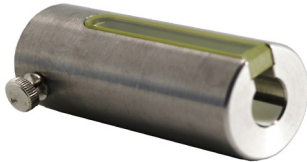
Pro-Tec™ PET Syringe Shields

- Constructed of .34" thick (9 mm) tungsten, attenuates FDG F-18 by 88%
- Available with or without a high density (5.6) flush mounted lead glass window
- A thumbscrew holds the syringes firmly in place



Without Lead Glass Window

- 007-985 Syringe Shield, 3 cc without glass
- 007-990 Syringe Shield, 5 cc without glass
- 007-995 Syringe Shield, 10 cc without glass



With Lead Glass Window

- 007-973 Pro-Tec PET Syringe Shield, 3 cc
- 007-975 Pro-Tec PET Syringe Shield, 5 cc
- 007-980 Pro-Tec PET Syringe Shield, 10 cc

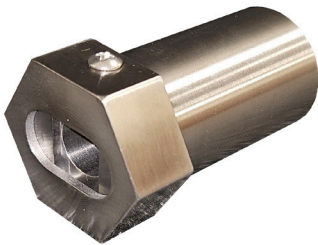
Replacement Screw

- 000-PET Pro-Tec PET Replacement Screw

Replacement Glass

- 007-974 Pro-Tec PET Replacement Glass

PET Syringe Shields for HSW/Norm Ject Syringes



- Available with or without Lead glass window
- 9mm tungsten

3HSW 3cc Syringe Shield for HSW/Norm Ject Syringes, No Lead Glass

5HSW 5cc Syringe Shield for HSW/Norm Ject Syringes, No Lead Glass

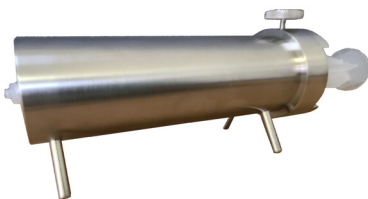


3HSW-G 3cc Syringe Shield with Lead Glass for HSW/Norm Ject Syringes

5HSW-G 5cc Syringe Shield with Lead Glass for HSW/Norm Ject Syringes

12HSW-G 12cc Syringe Shield with Lead GLass for HSW/Norm Ject Syringes

50 / 60 cc Syringe Shield



- 9mm Tungsten
- 4 Legs to prevent rolling
- Screw locks syringe in place
- 5.75" L x 1.875" D x 3.25" H (height to screw)
- Weight: 6.6 lbs

60-09T 50/60 ml, 9mm Tungsten Syringe Shield

PET-14SC Replacement Screw for 60-09T