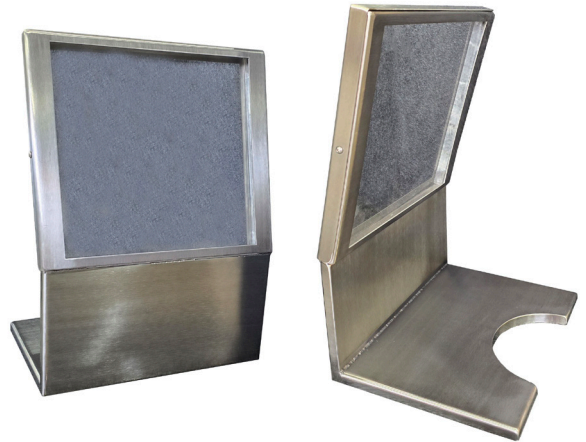


L-Block for Nuclear Medicine

- 0.5" Lead in the bottom and front of unit
- Lead Glass 12" x 12"
- 3.6mm Lead Equivalency
- Bite Cut Out for Dose Calibrator Chamber
- Width: 13.75"
- Depth: 10.25"
- Height: 19.125"
- 75 lbs total including lead glass



NMLB-BCO L-Block for Nuclear Medicine with Bite Cut Out



Standard L Block Shield

- Dimensions: 26" H x 18.5" W x 18.5" D
- .5" Lead Shielding
- Weight: 100 lb
- The lead glass of the Standard L Block Shield is 1/4" thick, which is equivalent to 1/16 inches of lead thickness
- Density of lead is 11.34 g/cm³

5130-2090 **Standard L Block Shield for Nuclear Med**

7310-1305 **Side Shields for Standard "L" Shield**