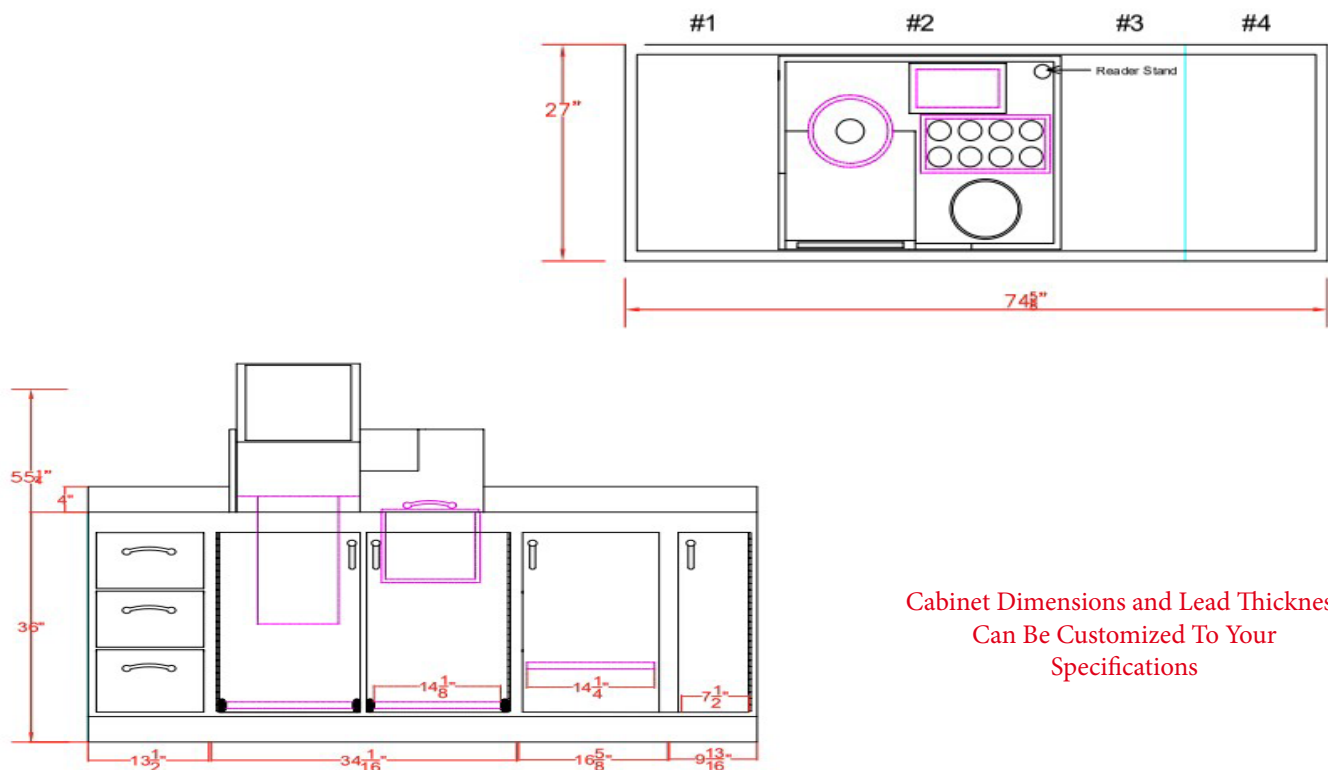


Lead-Lined Cabinet For Nuclear Medicine



Cabinet Dimensions and Lead Thickness
Can Be Customized To Your
Specifications

- Stainless Steel Inside & Outside
- 1/4" lead lining on front, back, top, sides, doors and drawers
- Non-spill lip (marine edge on top surface with 4" backsplash)
- L-Block with 1/2" lead lining in front with 12" x 12" lead glass (3.6mm lead equivalent)
- Cave with 1/2" lead lining with arm slots

- **Three Drawer Compartment:** Drawer inside dimensions: 10.5" W x 24" D x 7.5" H
- **Left side Compartment:** 15.5" W x 25" D x 26 3/4" H
1/4" Lead inside and slide out tray
1/2" Lead Lined Dose Calibrator chamber box
- **Second Compartment from left:** 15 3/4" W x 25" D x 26 3/4" H
1/2" lead-lined Wipe Test Counter Chamber shield
1/4" lead-lined Sharps Container shield
Pig Holder
- **Third Compartment from left:** Single Door with 1 Adjustable Shelf 100 Lbs Capacity
- **Right Compartment:** Single Door for Flood Sources